

Y:\P-2014\McDonald's\IP-McD10651\Design1 Prelim\IP-McD10651-Prelim.dwg, 0-COV, 8/27/2014 1:12:22 PM, gmund

GENERAL NOTES

- ALL DESIGNS AND PLANS REPRESENTED ON THESE DRAWINGS ARE OWNED BY JBI AND WERE CREATED FOR USE ON THE SPECIFIED PROJECT. NONE OF THE IDEAS, DESIGNS, ARRANGEMENTS OR PLANS REPRESENTED BY THESE DRAWINGS SHALL BE USED BY OR DISCLOSED TO ANY PERSON, FIRM OR CORPORATION FOR ANY PURPOSE WHATSOEVER WITHOUT WRITTEN PERMISSION FROM JBI
- WRITTEN DIMENSIONS SHALL TAKE PRECEDENCE OVER SCALED DIMENSIONS. ALL DIMENSIONS INDICATED ON THESE PLANS ARE FROM INSIDE WALL SURFACES. DO NOT SCALE OFF OF THESE PLANS - CONTACT JBI TO VERIFY ANY QUESTIONABLE DIMENSIONS.
- REFER TO ARCHITECTURAL AND/OR ENGINEERING DRAWINGS FOR COMPLETE AND ACCURATE DIMENSIONS OF BUILDING STRUCTURE.
- DO NOT USE FOR CONSTRUCTION UNLESS THE DRAWING HAS BEEN APPROVED BY THE CUSTOMER AND MARKED "APPROVED FOR CONSTRUCTION".
- DUE TO UNFORESEEN CHANGES THAT OCCUR DURING CONSTRUCTION, CONSTRUCTION MANAGER, AND/OR G.C. MUST VERIFY ALL INTERIOR BUILDING DIMENSIONS, EQUIPMENT, FURNITURE PLACEMENT, UTILITY LOCATIONS AND CONDITIONS AT THE JOB SITE AND NOTIFY JBI OF ANY DISCREPANCIES PRIOR TO CONSTRUCTION, MANUFACTURING, CORE DRILLING OR INSTALLATION.
- JBIMUST BE COPIED ON ANY BUILDING OR ARCHITECTURAL DRAWING CHANGES.
- JBISHALL NOT BE RESPONSIBLE FOR UNDISCLOSED OR UNSEEN SITE CONDITIONS.
- CORE DRILL EQUIPMENT REQUIRES A MINIMUM 5" THICK CONCRETE SLAB. G.C. TO FINISH CORE DRILL HOLES WITH 1/4" GROUT TO MATCH FLOOR TILE GROUT.
- JBIASSUMES THAT THERE IS NO INTERFERENCE IN SLAB FOR CORE DRILLED HOLES. ALL ELECTRICAL CONDUITS, WATER LINES, POST TENSION CABLES, ETC. LOCATED IN THE SLAB MUST BE IDENTIFIED BY THE ARCHITECT AND/ OR GC AND NOTED AND ACKNOWLEDGED ON JBI DESIGN DOCUMENTS; COST FOR ALL REPAIRS RELATED TO HIDDEN CONDITIONS ARE THE RESPONSIBILITY OF THE CUSTOMER.
- FOR REMODEL INSTANCES JBIASSUMES THAT ALL EXISTING STEEL WAS PROPERLY REMOVED IN ITS ENTIRETY AND ALL HOLES FILLED
- JBIPROVIDES RECOMMENDATIONS FOR OWNER/G.C. SUPPLIED ITEMS. IT IS THE RESPONSIBILITY OF THE OWNER/G.C. TO APPROVE AND OBTAIN SPECIFIED PRODUCTS. THE OWNER'S RESPONSIBILITIES INCLUDE ALL CONTRACTS WITH THE GENERAL & SUB CONTRACTORS AND THEIR COMPLIANCE WITH THESE SPECIFICATIONS.
- JBIDoes NOT WARRANT RECOMMENDED MATERIALS SUPPLIED BY THE OWNER/ G.C. THE WARRANTY IS PROVIDED BY THE SELLER OR MANUFACTURER OF THE MATERIAL.
- IN RARE INSTANCES, THE OWER/G.C. MAY BE REQUIRED TO REMOVE A WINDOW IN ORDER TO GAIN FURNITURE ACCESS INTO THE DINING AREA.

FINAL APPROVAL TERMS

- PLEASE SIGN THIS COVER PAGE TO INDICATE ACCEPTANCE OF PROJECT AS SHOWN IN DRAWING PACKAGE.
- A SIGNED SALES ORDER SIGNIFIES AN OBLIGATION TO PROCEED WITH THE EXECUTION OF THE SPECIFIED PROJECT.
- A DEPOSIT IS REQUIRED TO START PRODUCTION.
- CHANGE ORDERS ARE SUBJECT TO A MINIMUM \$500 PROCESSING FEE.
- ALL ITEMS PRODUCED FOR YOUR PROJECT ARE CUSTOM MADE TO FIT THE BUILDING BASED ON INFORMATION GATHERED DURING THE INITIAL JOB SITE SURVEY OR THE PROVIDED ARCHITECTURAL DRAWINGS. SUCH PRODUCTS MAY NOT BE RETURNED OR EXCHANGED. JBIMUST BE NOTIFIED OF ANY BUILDING OR ARCHITECTURAL DRAWING CHANGES IN ORDER TO ENSURE PROPER PRODUCT FIT.

PLEASE SEE FINAL APPROVAL TERMS

ON SITE DATE	--
CUSTOMER SIGNATURE DUE DATE	--

HELD ITEMS WILL NOT BE PRODUCED UNTIL ADDITIONAL INFORMATION IS PROVIDED.

SHEET	ITEM	DESCRIPTION	REQUIRED INFORMATION
--	--	--	--
--	--	--	--
--	--	--	--
--	--	--	--

HELD ITEM APPROVAL DUE DATE	-
-----------------------------	---

Customer Name: _____

Customer Signature/Date: _____

PROJECT INFORMATION:

PROJECT NO.....: P-MCD10651
NAT'L STORE NO.: 36839
BUILDING TYPE....:
CUSTOMER.....: FRED AND CHAD TILLMAN
ADDRESS.....: WINCHESTER RD.
CITY / STATE.....: MEMPHIS, TENNESSEE

JBIMCONTACTS:

SALES CONSULTANT:

LORI HEIST
678-793-5315

PROJECT COORDINATOR:

ELEANOR DE LEON
310-667-5642

LEAD DESIGNER

JESSIE ALMAZAN
310-667-5626



2650 El Presidio Street
Long Beach, CA 90810
T 1 310 537 8200
F 1 310 604 3827
www.jbi-interiors.com

PRELIMINARY NOT FOR CONSTRUCTION

*BID SET / BRAND REVIEW SUBMITTAL SET

BRAND REVIEW
APPROVAL PENDING

CURRENT REVISION LETTER ☐ DATE 08-26-14

THIS SET INCLUDES:

- 0-COVER SHEET
- 1a-SEATING LAYOUT PLAN
- 1b-CORE DRILL PLAN
- 2-SHADED PLAN
- 3-FINISH PLAN
- 4-CEILING PLAN
- 5a-ELEVATIONS
- 5b-ELEVATIONS
- 5c-ELEVATIONS
- 5d-ELEVATIONS
- 5e-ELEVATIONS
- 5f-ELEVATIONS
- 5g-ELEVATIONS
- 6-STANDARD DETAILS
- 7a-GRAPHIC CROP GUIDE
- 7b-GRAPHIC CROP GUIDE
- 8a-JBILEGEND
- 8b-JBILEGEND
- 8c-JBILEGEND
- 8d-JBILEGEND
- 9a-GCLEGEND
- 9b-GCLEGEND

REVISION HISTORY:

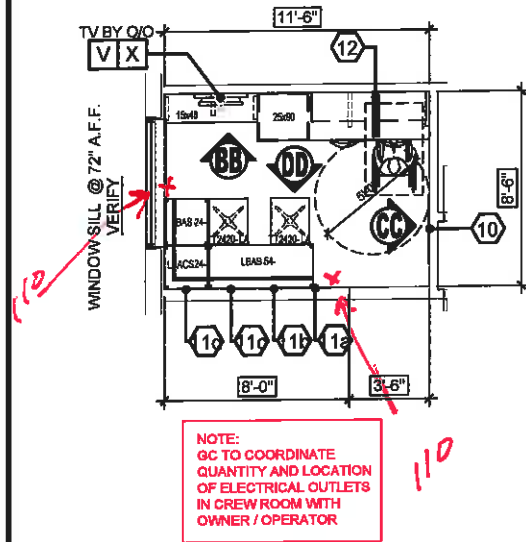
-	08-26-14	gm
-	08-26-14	MS
-	To Follow	-
-	08-26-14	gm
-	08-26-14	gm
-	08-26-14	gm
-	08-26-14	gm
-	08-26-14	gm
-	08-26-14	gm
-	08-26-14	gm
-	08-26-14	gm
-	08-26-14	gm
-	To Follow	-
-	To Follow	-
-	08-26-14	gm
-	08-26-14	gm
-	08-26-14	gm
-	08-26-14	gm
-	08-26-14	gm

SET DRAWN / REVISED FROM	DATE RECEIVED:	OBTAINED FROM:
--	-	-
--	-	-
--	-	-
--	-	-



Y:\P-2014\McDonald's\P-McD10651\Design1 Prelim\P-McD10651-Prelim.dwg, 1a, 8/27/2014 1:12:26 PM, gmund

DINING CAPACITY:	107
ADA SEATS REQ'D.:	6
ADA SEATS PROVIDED:	6
ALL BOXED DIMENSIONS ARE TO BE FIELD VERIFIED	
SERVICE COUNTER TO BE AT 34" AFF (INCLUDES TOP) TO MEET ADA REQUIREMENTS	



- INDICATES REQUIRED ELECTRICAL
FLOOR STUB-OUT BY G.C.
[Y]
- INDICATES REQUIRED WALL
ELECTRICAL OUTLETS BY G.C.
[X]

X PLEASE
NOTE
aisle widths
center section
front area

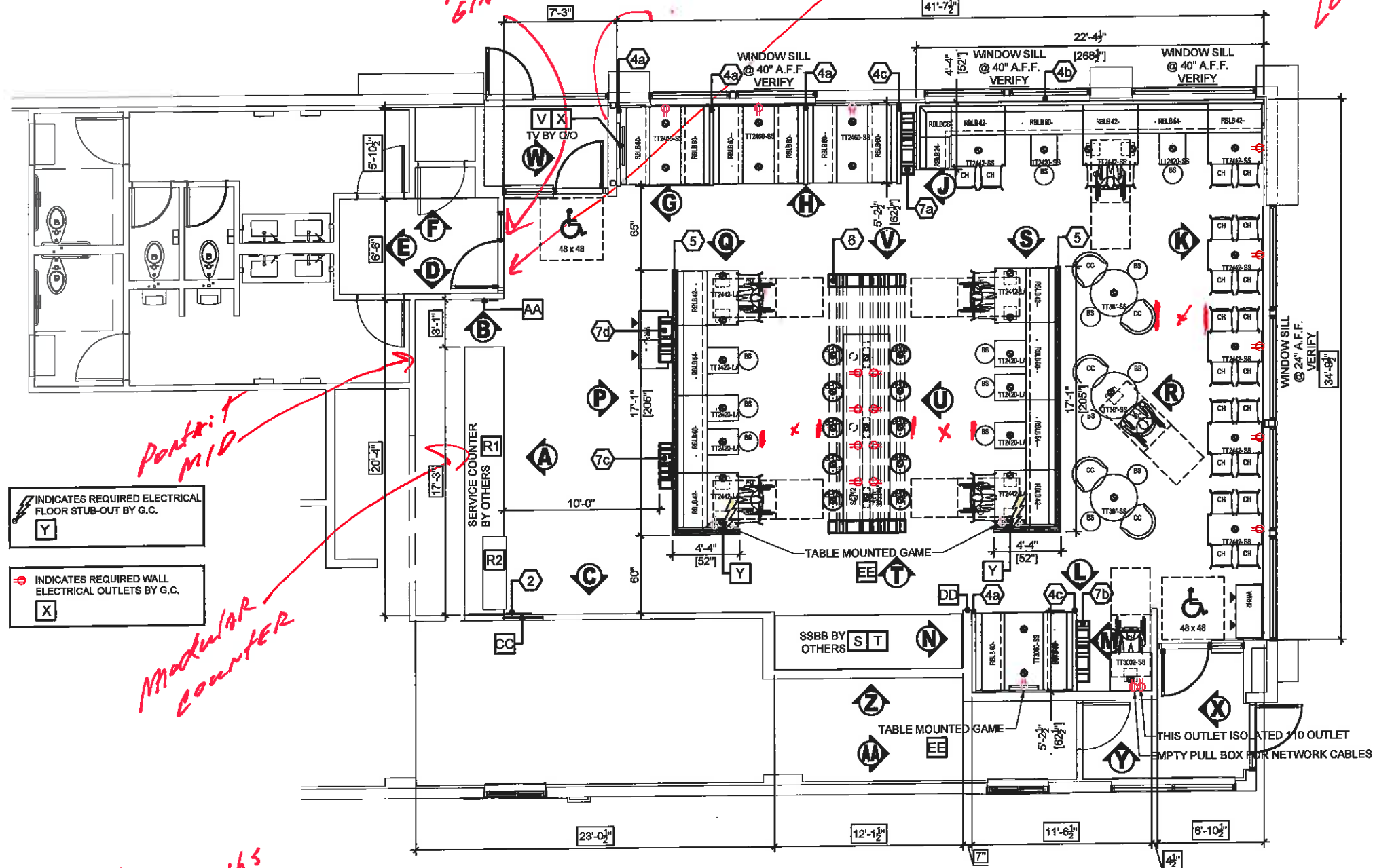
Modular
counter

Portrait
MID

NO
GLASS

LAMINATE
DOOR WITH
36 GLASS

TV
LOCATION?



2650 El Presidio Street
Long Beach, CA 90810
T 1 310 537 8200
F 1 310 604 3827
www.jbi-interiors.com

REVISIONS

LTR	DATE	BY	CHK'D
-----	------	----	-------



ALLEGRO VIVID
CORE

BUILDING TYPE:

STORE NUMBER: 36839

WINCHESTER
ROAD
MEMPHIS,
TENNESSEE

SEATING LAYOUT PLAN

DATE: 08-26-14

SCALE: 1/8" = 1'-0"

DESIGNER: MS

CHK'D:

DRAWING NUMBER

PAGE

P-McD10651

1a



REVISIONS

[illegible]**BUILDING TYPE:**

STORE NUMBER: 36839

WINCHESTER
ROAD
MEMPHIS,
TENNESSEE

SHADED PLAN

DATE: 08-26-14

SCALE: 1/8"=1'-0"

DESIGNER: gm

CHK'D:

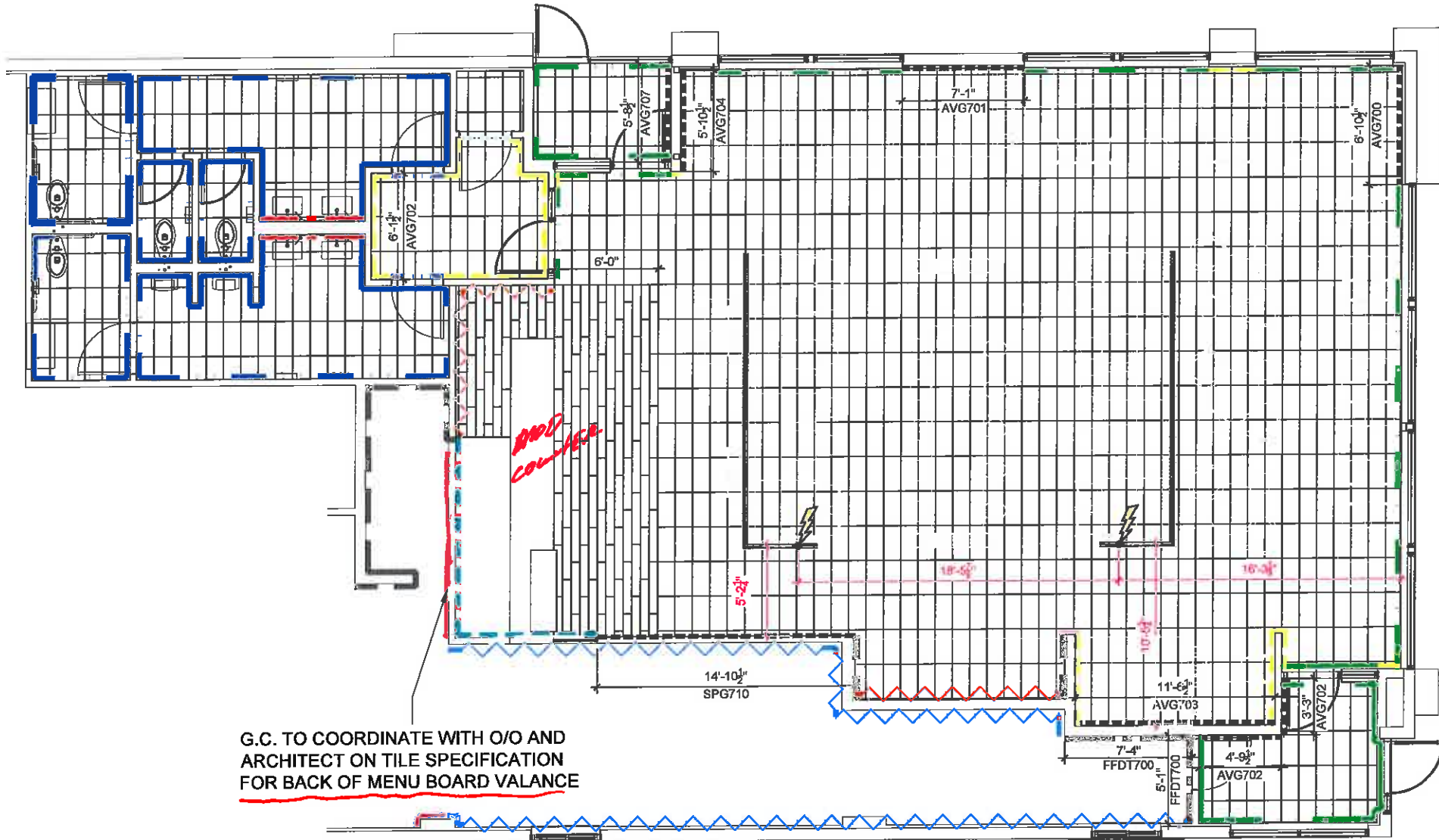
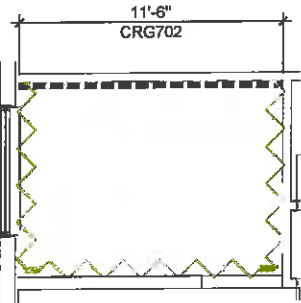
DRAWING NUMBER

PAGE

P-McD10651

2

Y:\P-2014\McDonald's\P-McD10651\Design1 Prelim\P-McD10651-Prelim.dwg, 3, 8/27/2014 1:12:32 PM, gmuendo



WALL FINISH LEGEND	
SYMBOL	ITEM
	3a Z
	3b Z
	G1 J K L
	G2
	H
	K2
	M1
	M2
	M3
	M4
	M4 H
	N1
	N2
	DD

FLOOR TILE LEGEND	
SYMBOL	ITEM
	F1
	F2

BEFORE FINAL INSPECTION, REMOVE PROTECTIVE COVERINGS AND PERFORM FINAL CLEANING.

TILE CLEANER: DETERDEK, BY FILA SURFACE CARE PRODUCTS - NO SUBSTITUTIONS ALLOWED
CAN BE ORDERED FROM EUROWEST, DAL TILE, OR DIRECT FROM MANUFACTURER: FILA/DETERDEK
POST CONSTRUCTION CLEANING REQUIRED ON ALL INSTALLATIONS PRIOR TO RESTAURANT TURN OVER.

APPLY CLEANER PER MANUFACTURER'S WRITTEN INSTRUCTIONS.
REFERENCE: 2013 McDONALD'S PROJECT MANUAL - SECTION 093000 TILING INTERIOR



2650 El Presidio Street
Long Beach, CA 90810
T 1 310 537 8200
F 1 310 604 3827
www.jbi-interiors.com

REVISIONS

LTR	DATE	BY	CHK'D
-----	------	----	-------



BUILDING TYPE: -

STORE NUMBER: 36839

WINCHESTER
ROAD
MEMPHIS,
TENNESSEE

FINISH PLAN

DATE: 08-26-14

SCALE: 1/8"=1'-0"

DESIGNER: gm

CHK'D:

DRAWING NUMBER

PAGE

P-McD10651

3

Y:\P-2014\McDonald's\P-McD10651\Design\1 Prelim\P-McD10651-Prelim.dwg, 4, 8/27/2014 1:12:34 PM, gmund



2650 El Presidio Street
Long Beach, CA 90810
T 1 310 537 8200
F 1 310 604 3827
www.jbi-interiors.com

REVISIONS

LTR DATE BY CHK'D



BUILDING TYPE: -

STORE NUMBER: 36839

WINCHESTER
ROAD
MEMPHIS,
TENNESSEE

CEILING PLAN

DATE: 08-26-14

SCALE: 1/8"=1'-0"

DESIGNER: gm

CHK'D:

DRAWING NUMBER

PAGE

P-McD10651

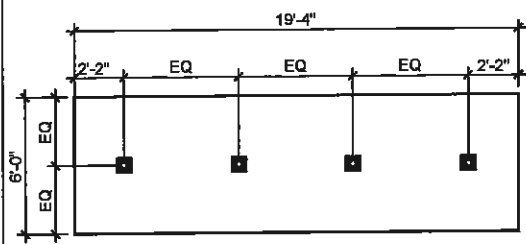
4

LIGHTING LEGEND	
SYMBOL	ITEM
	D1
	NOT USED
	NOT USED
	D4
	NOT USED
	D6
	E1
	NOT USED
	E3

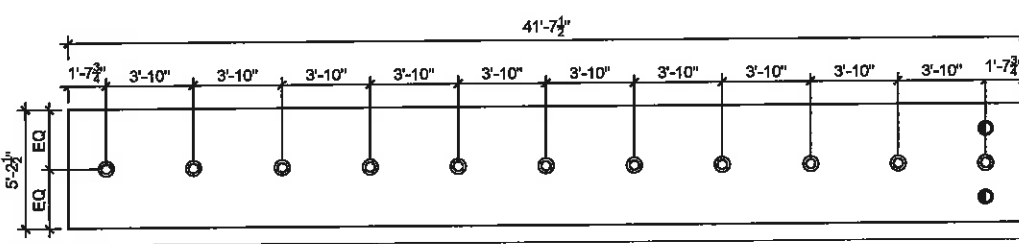
CEILING GENERAL NOTES:

1. PROJECT ARCHITECT OR ARCHITECT OF RECORD TO REVIEW JBI REFLECTED CEILING PLAN AND SECURITY LIGHTING PLAN IN ORDER TO MAKE NECESSARY/REQUIRED ADJUSTMENTS TO BOTH THE MECHANICAL AND ELECTRICAL PLANS THAT ARE PART OF THIS SPECIFIC SITE ARCHITECTURAL SET.
2. ALL RECESSED FIXTURES SHALL BE LOCATED IN CENTER OF THE CEILING TILES UNLESS OTHERWISE NOTED.
3. ALL ACCENT AND DECORATIVE LIGHTING SUCH AS PENDANT LIGHTS TO BE COORDINATED WITH AND INSTALLED PER DECOR DRAWINGS.
4. GENERAL LIGHTING PLAN TO BE PROVIDED BY SECURITY LIGHTING. G.C. TO USE SECURITY LIGHTING PLAN TO LOCATE LIGHT FIXTURES.
5. G.C. TO ENSURE THAT ALL MECHANICAL WORK (HVAC VENT LOCATIONS) HAS BEEN COORDINATED AND ADJUSTED IN ORDER NOT TO INTERFERE WITH JBI'S CEILING PLAN ARRANGEMENT.

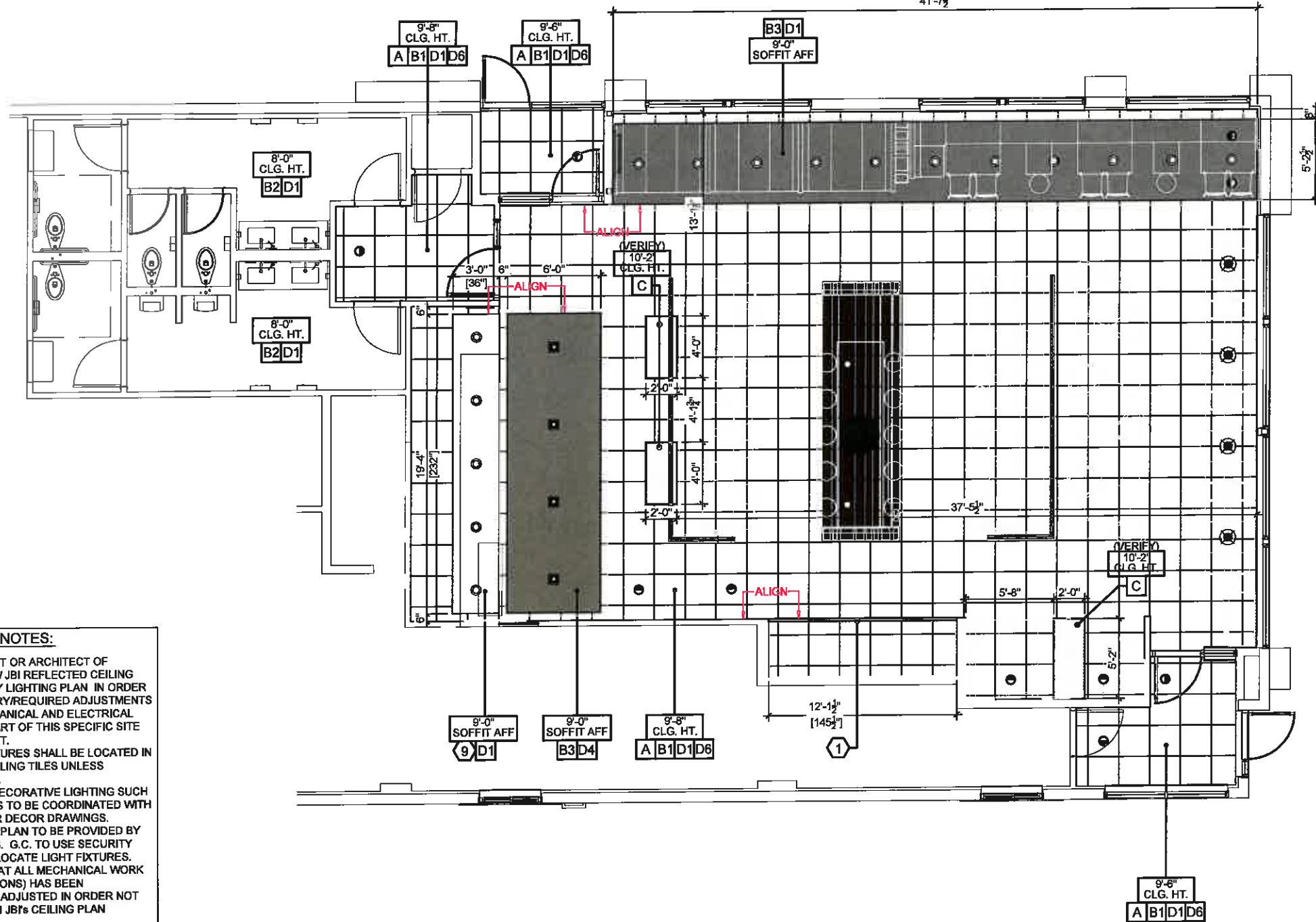
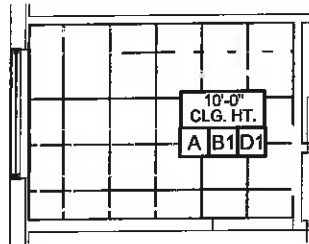
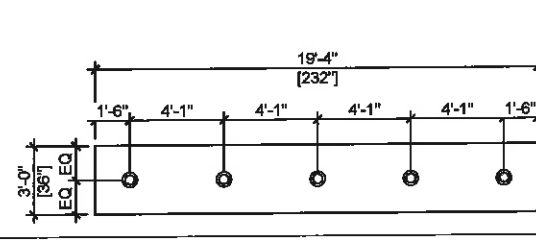
B3/D4 PAINTED SOFFIT DETAIL

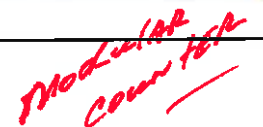


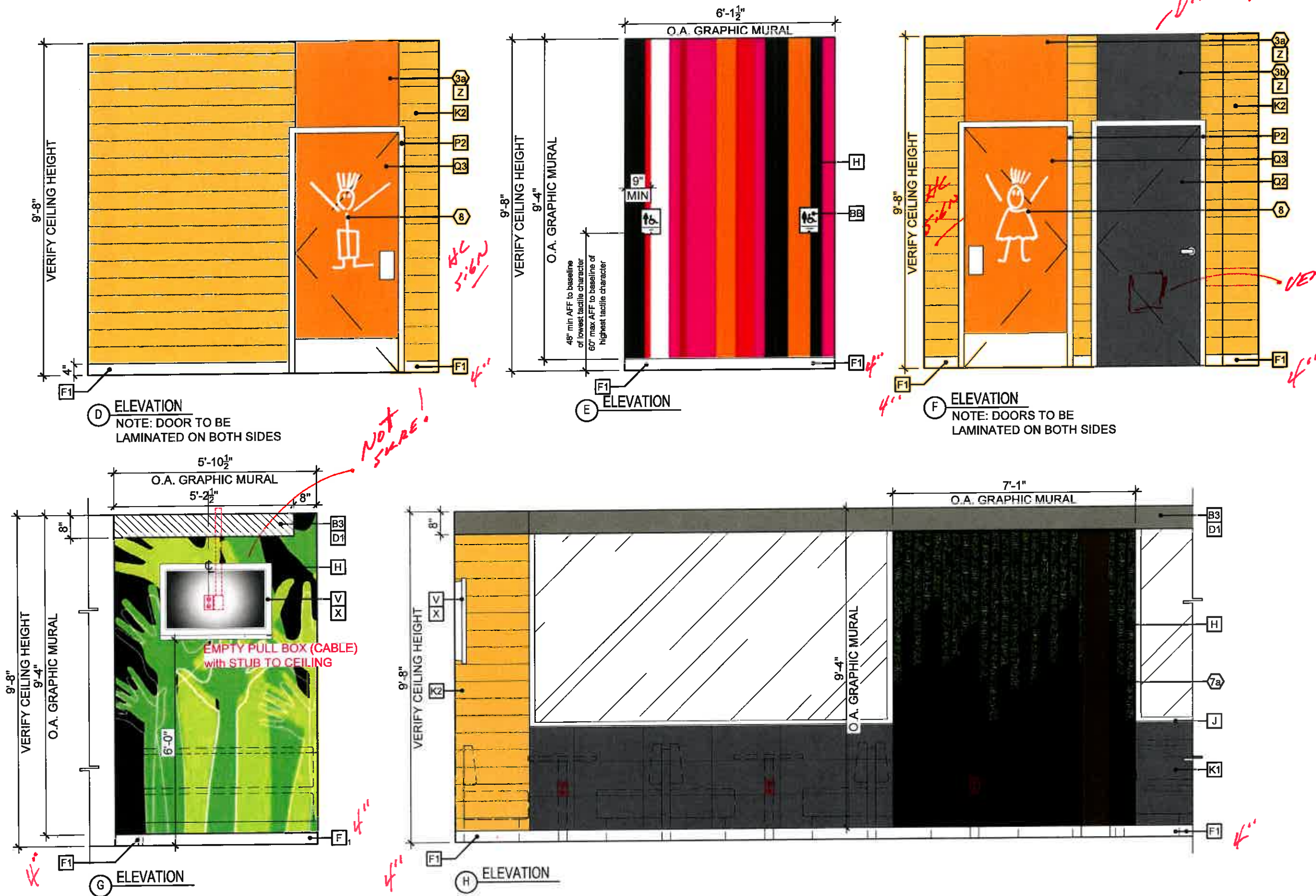
B3/D4 PAINTED SOFFIT DETAIL



9/D1 CLOUD SOFFIT DETAIL







2650 El Presidio Street
Long Beach, CA 90810
T 1 310 537 8200
F 1 310 604 3827
www.jbi-interiors.com

REVISIONS

[illegible]**BUILDING TYPE:**

STORE NUMBER: 36839

WINCHESTER
ROAD
MEMPHIS,
TENNESSEE

ELEVATIONS

DATE: 08-26-14

SCALE: 3/8"=1'-0"

DESIGNER: gm

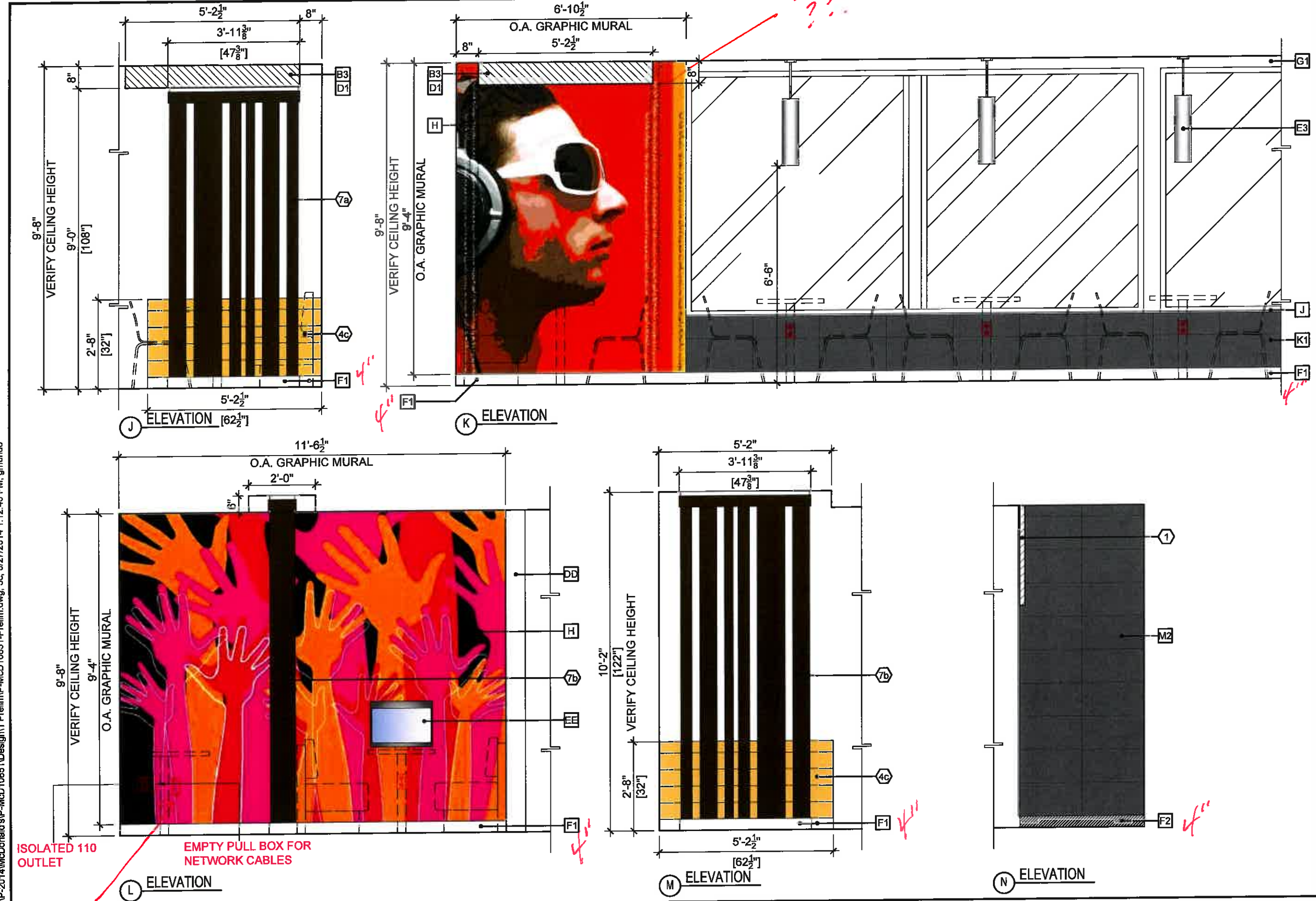
CHK'D:

DRAWING NUMBER	
----------------	--

PAGE

P-McD10651

5b



2650 El Presidio Street
Long Beach, CA 90810
T 1 310 537 8200
F 1 310 604 3827
www.jbi-interiors.com

REVISIONS

LTR	DATE	BY	CHK'D
-----	------	----	-------

[illegible]**BUILDING TYPE:**

STORE NUMBER: 36839

WINCHESTER
ROAD
MEMPHIS,
TENNESSEE

ELEVATIONS

DATE: 08-26-14

SCALE: 3/8"=1'-0"

DESIGNER: gm

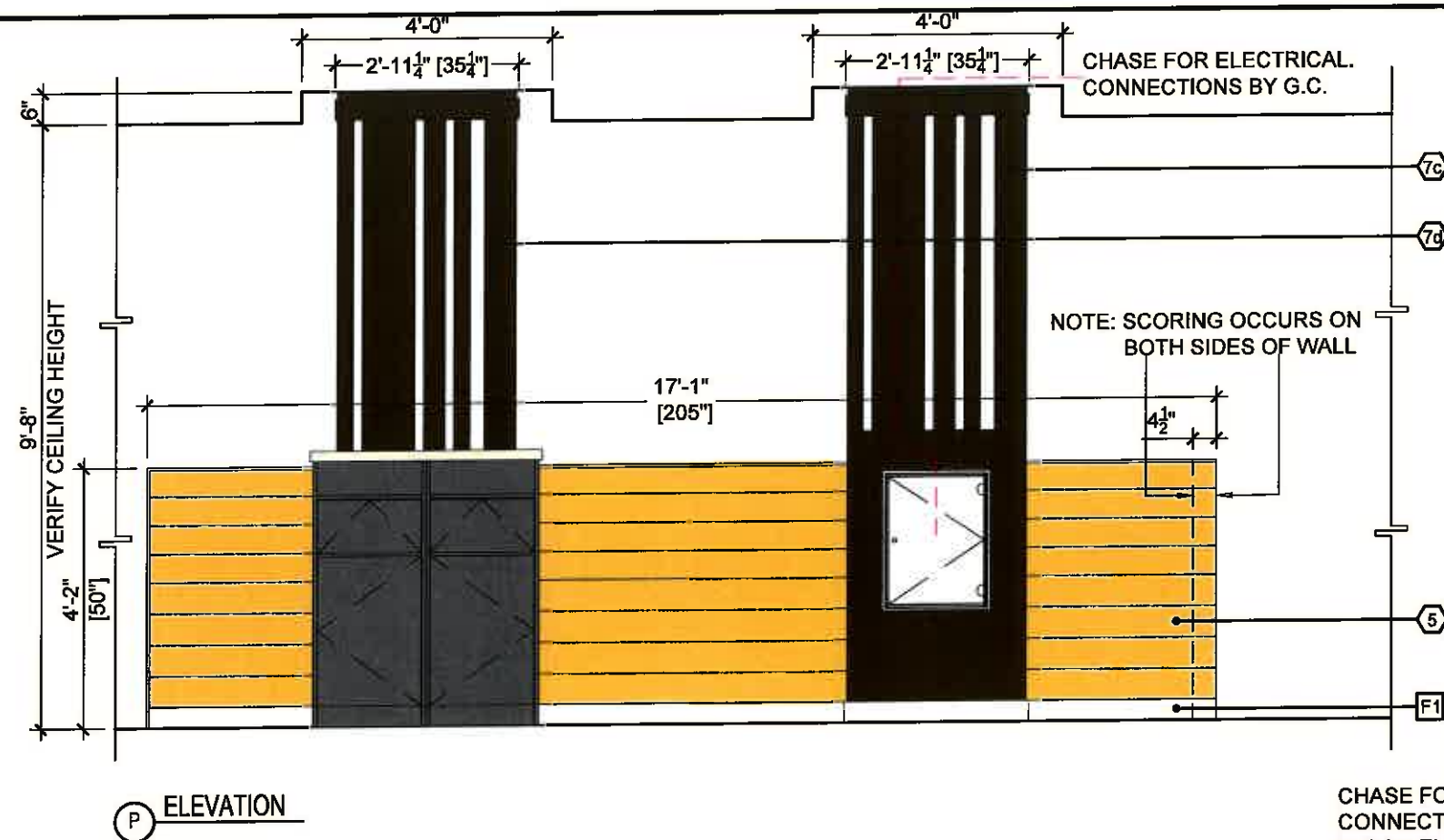
PKD:

DRAWING NUMBER	
----------------	--

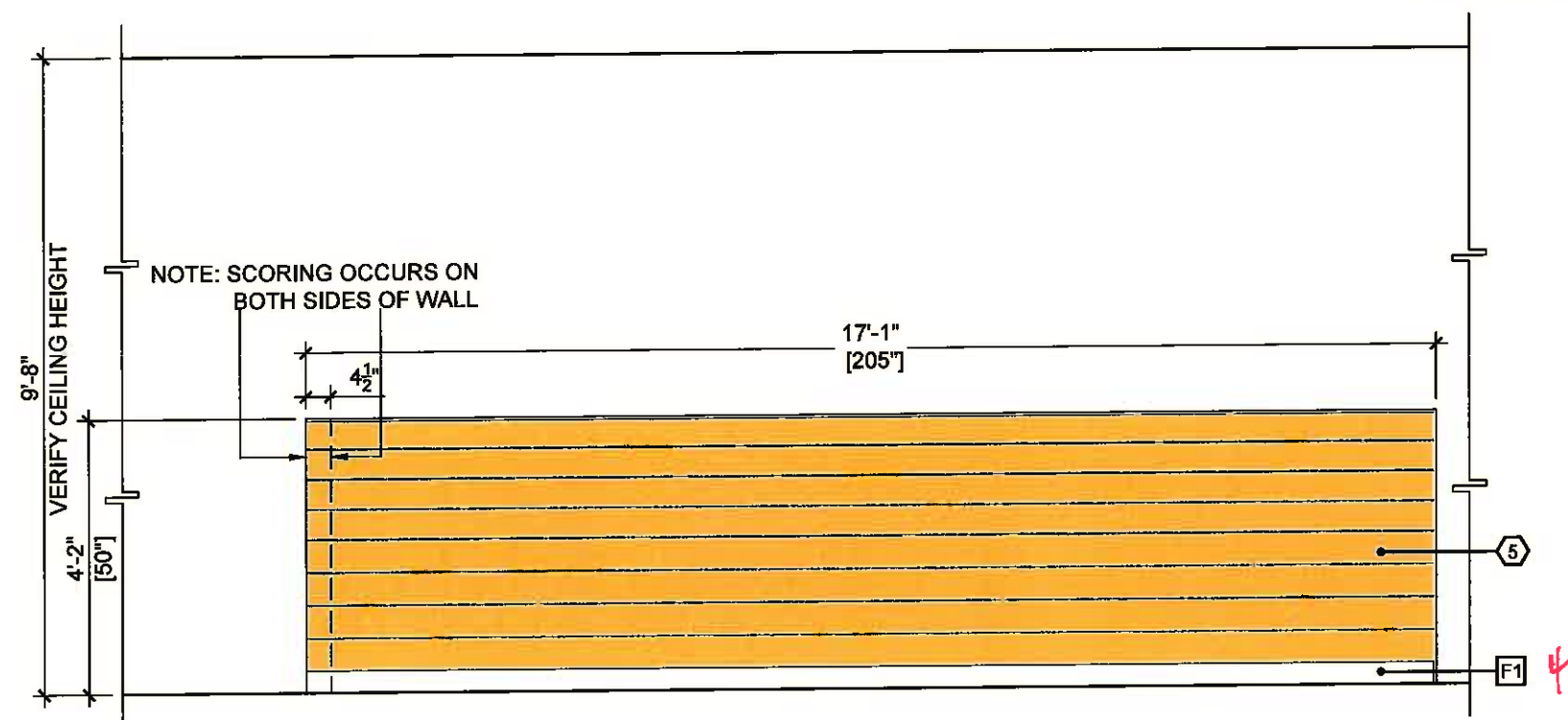
PAGE

P-McD10651

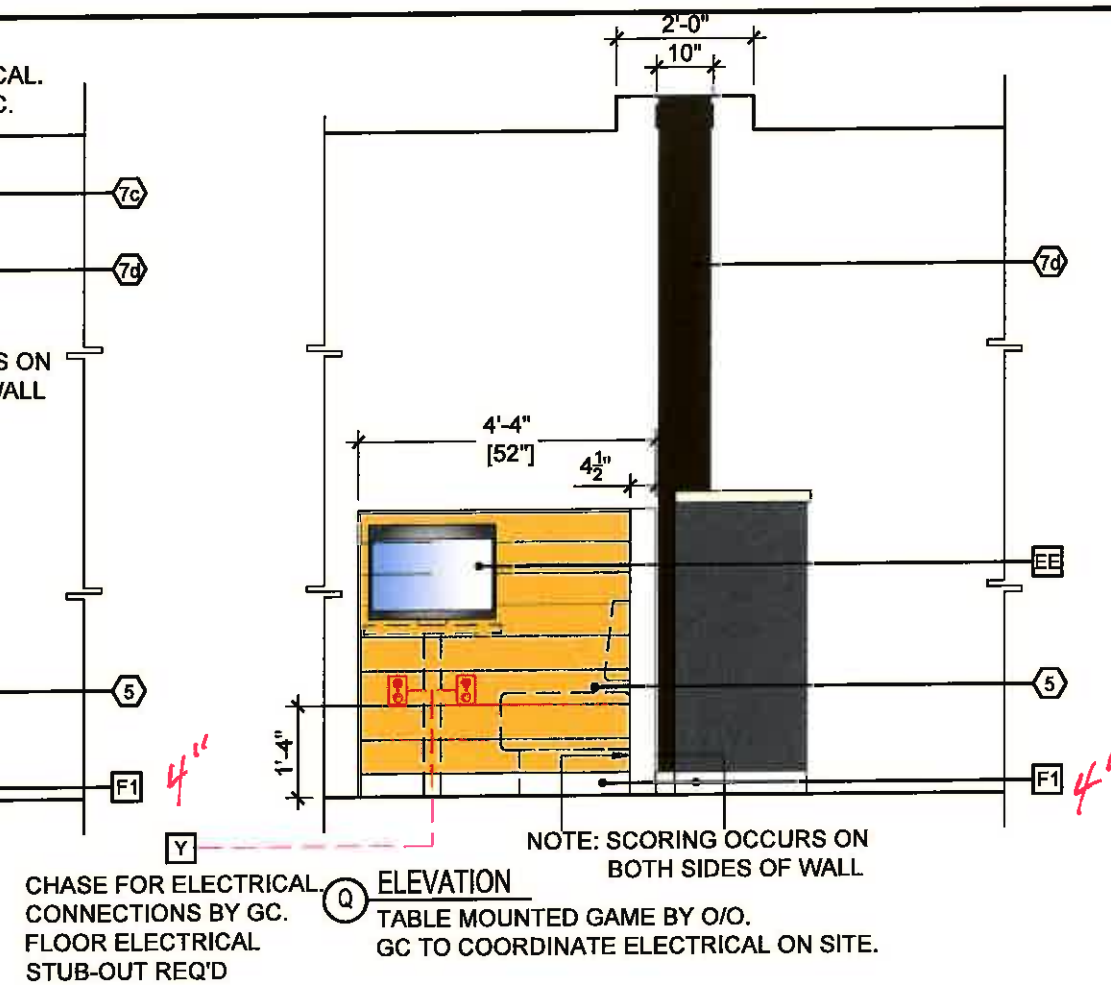
5c



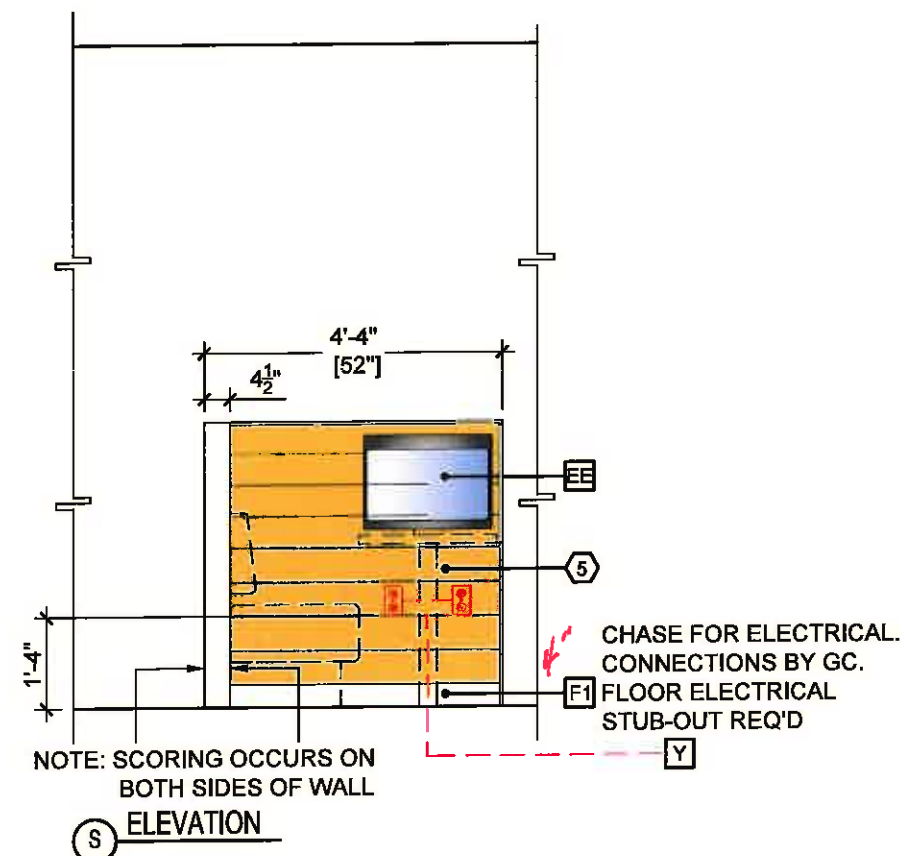
(P) ELEVATION



(R) ELEVATION _____



Q ELEVATION BOTH SIDES OF WALL.
TABLE MOUNTED GAME BY O/O.
GC TO COORDINATE ELECTRICAL ON SITE.



(S) ELEVATION



2650 El Presidio Street
Long Beach, CA 90810
T 1 310 537 8200
F 1 310 604 3827
www.lbi-interiors.com

REVISIONS

LTR	DATE	BY	CHK
-----	------	----	-----

[illegible]

BUILDING TYPE:

STORE NUMBER: 36839

WINCHESTER
ROAD
MEMPHIS,
TENNESSEE

ELEVATIONS

DATE: 08-26-14

SCALE: 3/8"=1'-0"

DESIGNER: gm

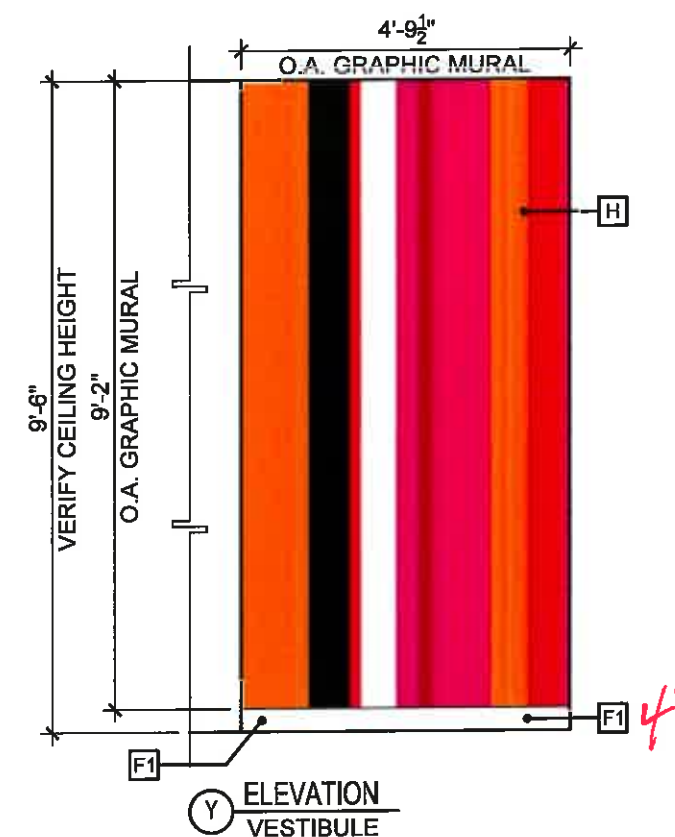
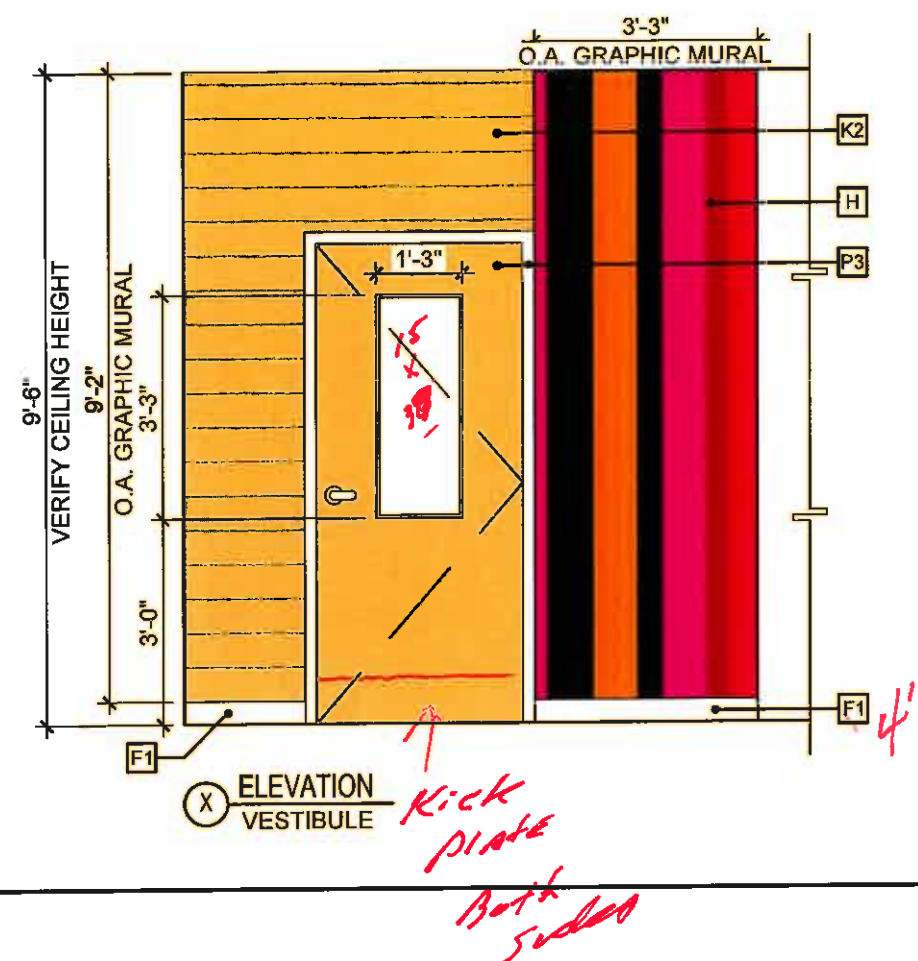
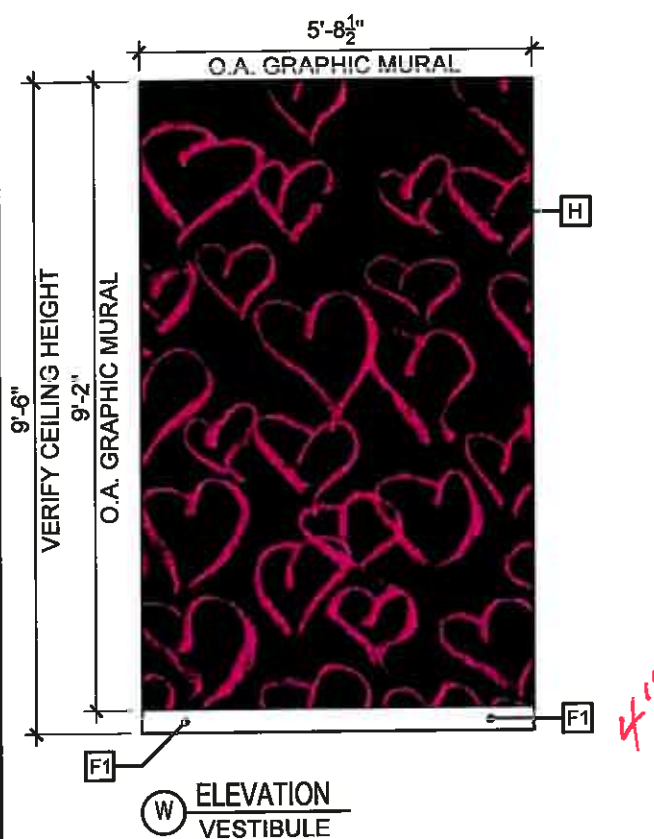
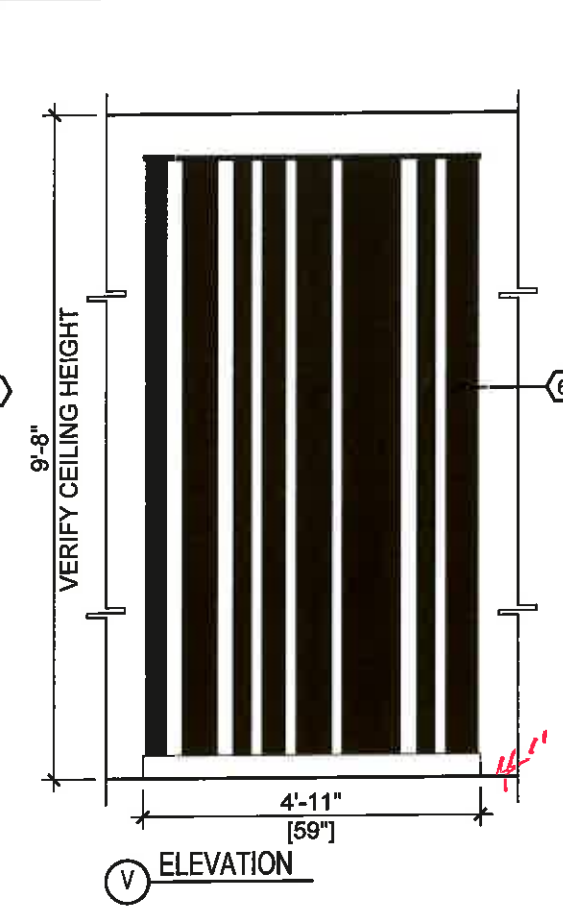
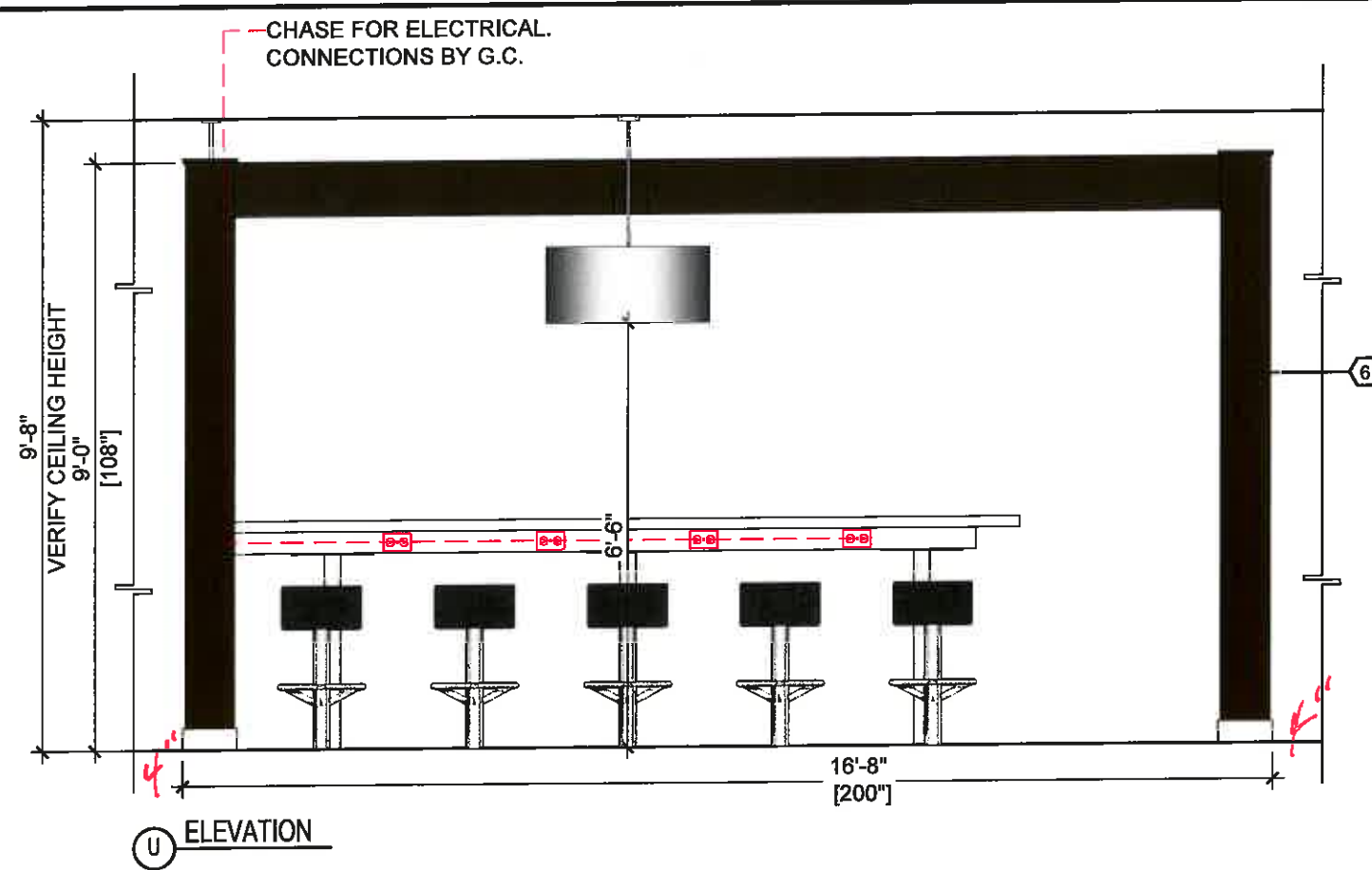
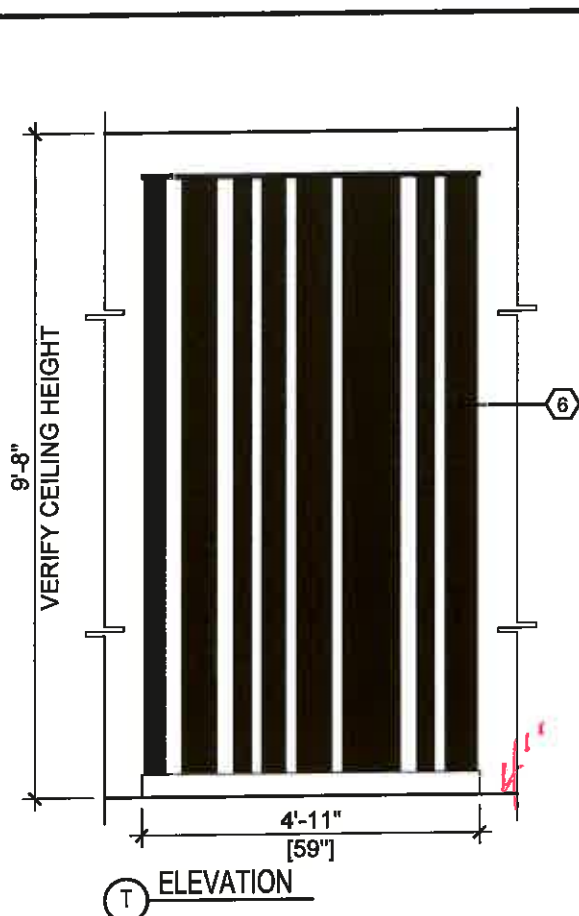
CHK'D:	
--------	--

DRAWING NUMBER

PAGE

P-McD10651

5d



2650 El Presidio Street
Long Beach, CA 90810
T 1 310 537 8200
F 1 310 604 3827
www.jbi-interiors.com

REVISIONS

LTR	DATE	BY	CHK'D
-----	------	----	-------

[illegible]**BUILDING TYPE:**

STORE NUMBER: 36839

WINCHESTER
ROAD
MEMPHIS,
TENNESSEE

ELEVATIONS

DATE: 08-26-14

SCALE: 3/8"=1'-0"

DESIGNER: qm

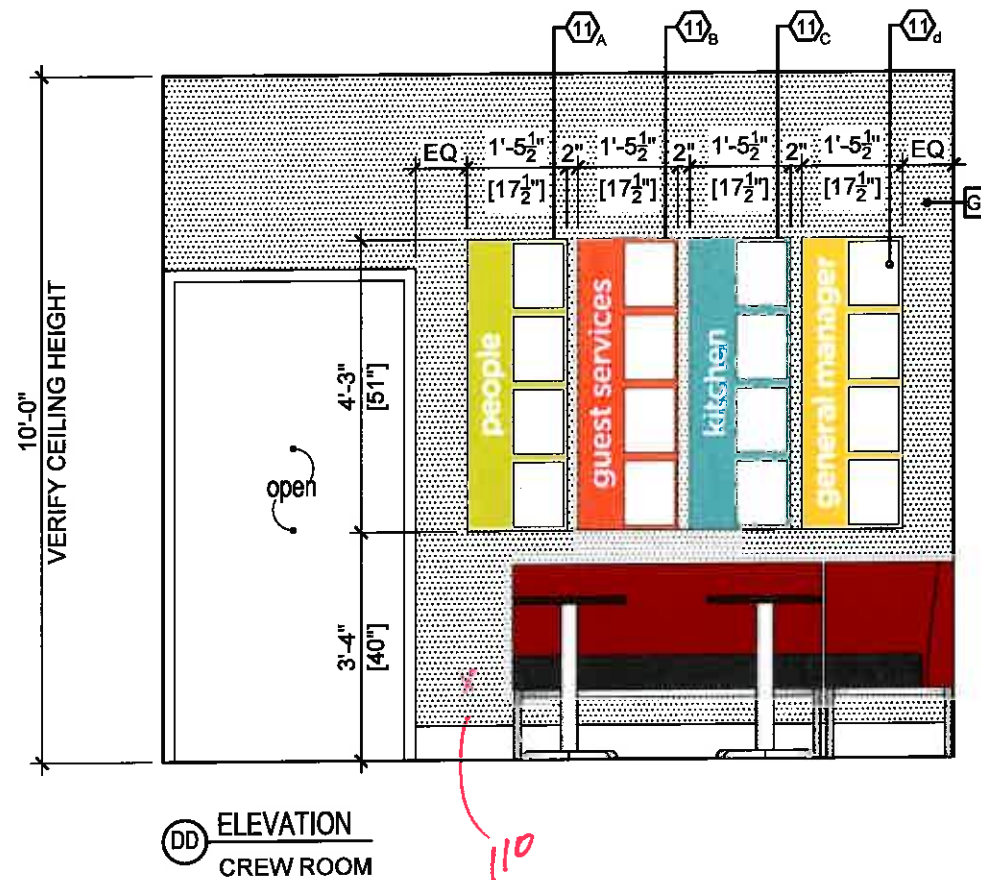
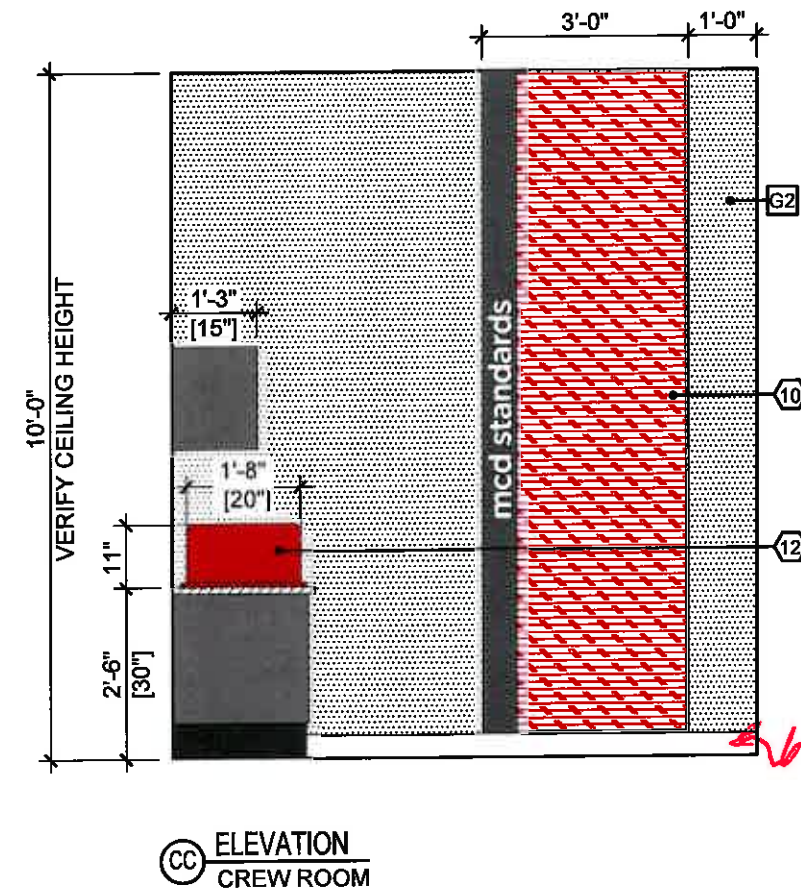
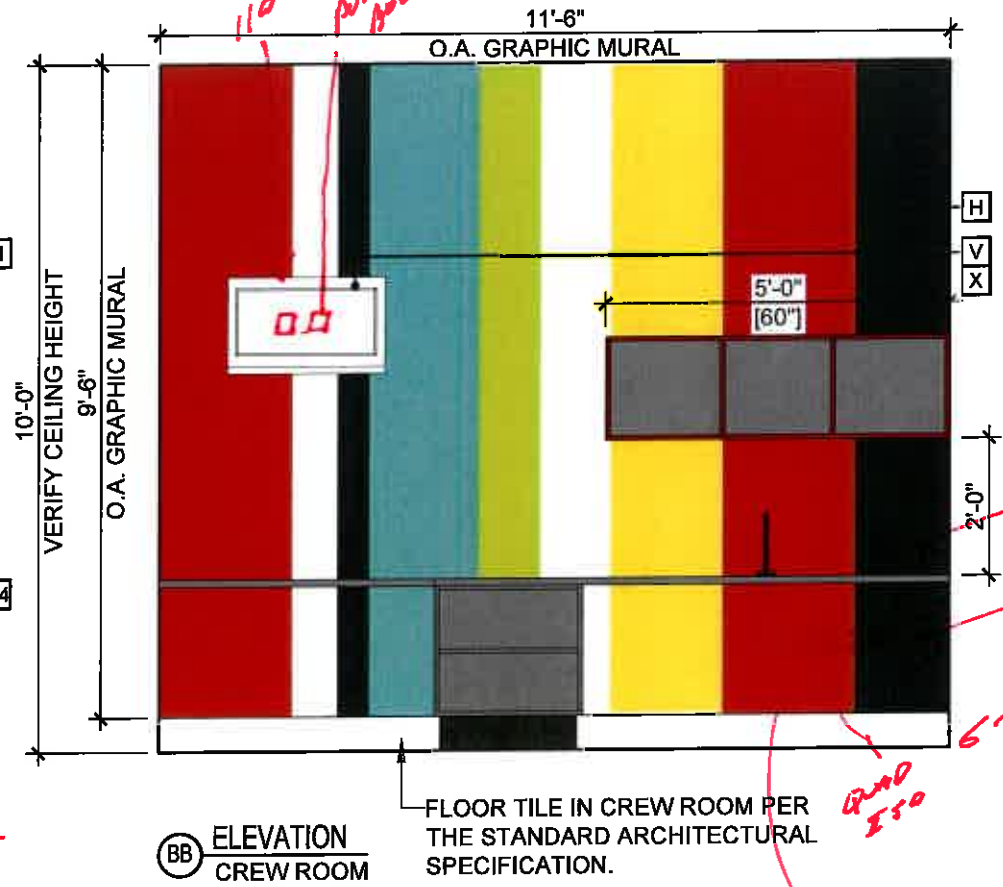
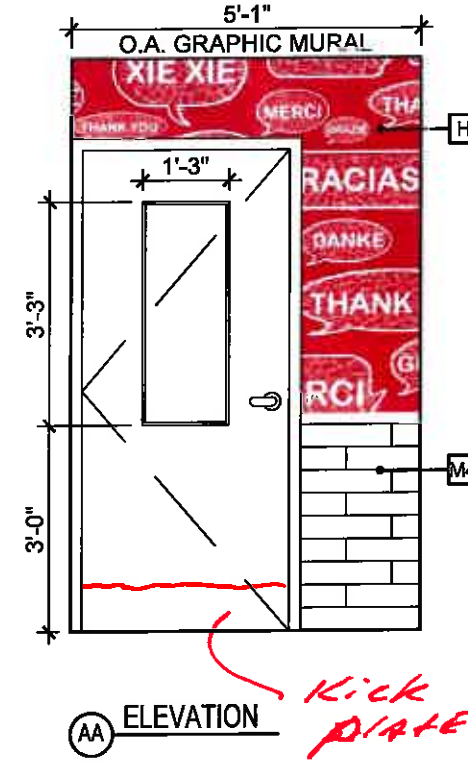
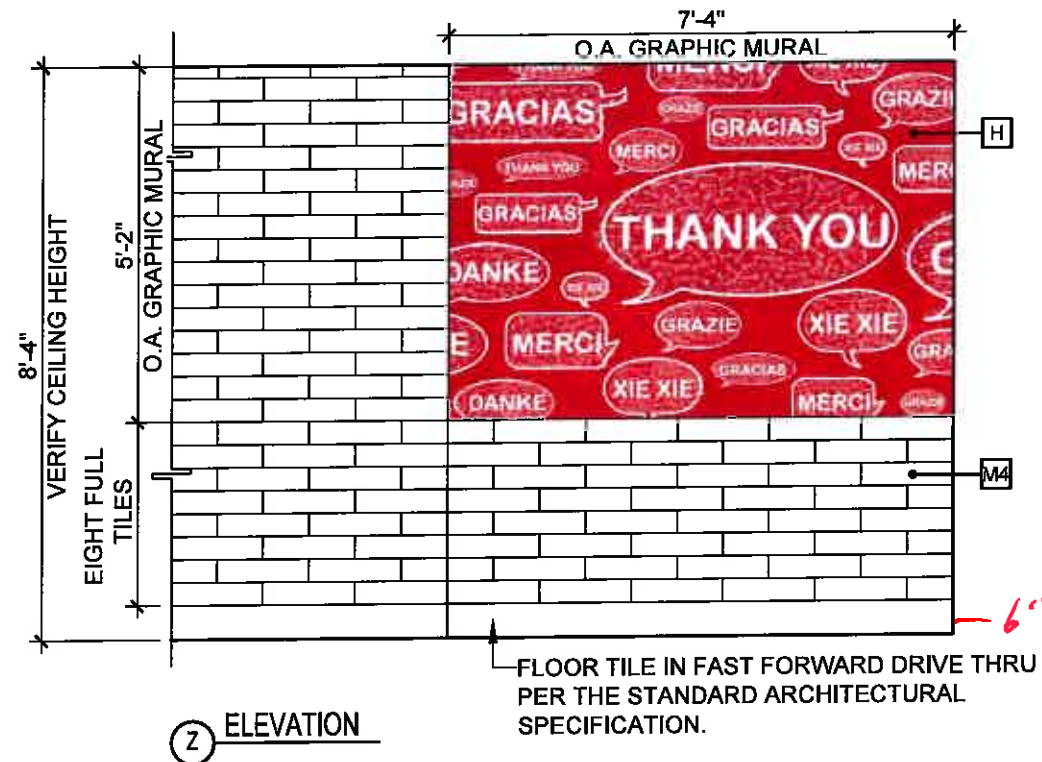
CHK'D:

DRAWING NUMBER

PAGE

P-McD10651

5e



2650 El Presidio Street
Long Beach, CA 90810
T 1 310 537 8200
F 1 310 604 3827
www.jbi-interiors.com

REVISIONS

LTR	DATE	BY	CHK'D
-----	------	----	-------

[illegible]**BUILDING TYPE:**

STORE NUMBER: 36839

WINCHESTER
ROAD
MEMPHIS,
TENNESSEE

ELEVATIONS

DATE: 08-26-14

SCALE: 3/8"=1'-0"

DESIGNER: gm

CHK'D:

DRAWING NUMBER	
----------------	--

PAGE

P-McD10651

5f



LTR	DATE	BY	CHK'D
-----	------	----	-------

[illegible]

STORE NUMBER: 36839

WINCHESTER
ROAD
MEMPHIS,
TENNESSEE

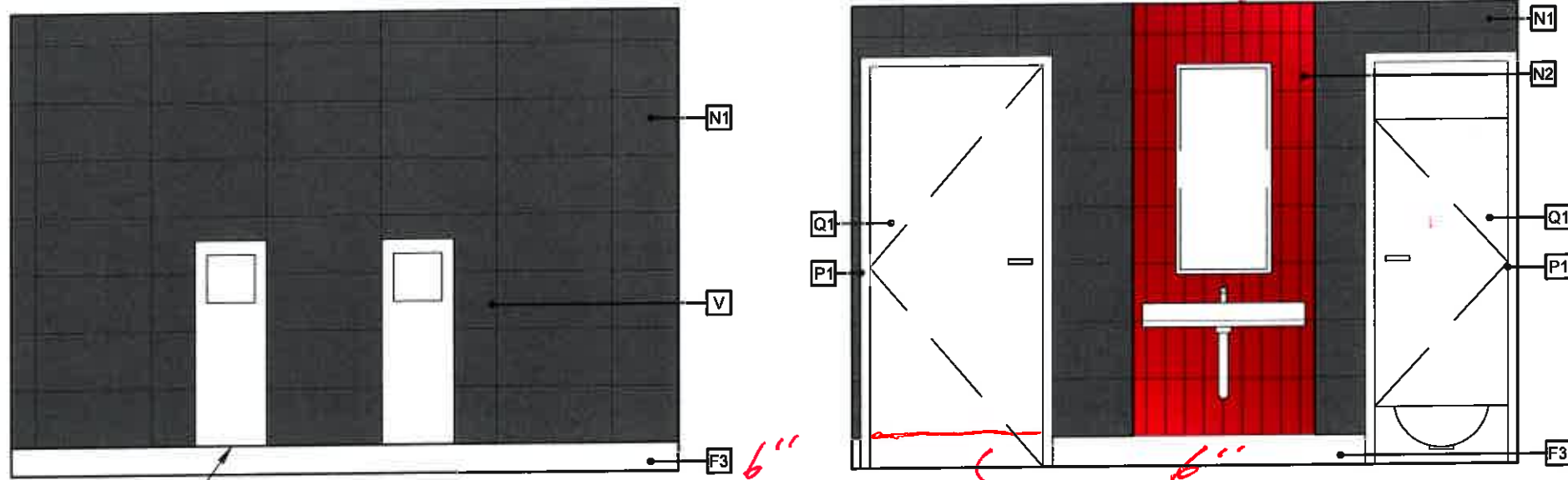
DATE: 08-26-14

SCALE: 3/8"=1'-0"

DESIGNER: gm

DRAWING NUMBER	PAGE
----------------	------

P-McD10651	5g
-------------------	-----------



G.C. TO ALIGN CORIAN——
PANEL WITH TOP OF COVE BASE

TYPICAL RESTROOM WALL TILE

Y:\P-2014\McDonald's\P-McD10651\Design\1 Prelim\P-McD10651-Prelim.dwg; 5g; 8/27/2014 1:12:52 PM, gmundo

ITEMS BY JBI



2650 El Presidio Street
Long Beach, CA 90810
T 1 310 537 8200
F 1 310 604 3827
www.jbi-interiors.com

REVISIONS

LTR DATE BY CHK'D



BUILDING TYPE: -

STORE NUMBER: 36839

WINCHESTER
ROAD
MEMPHIS,
TENNESSEE

JBI LEGEND

DATE: 08-26-14

SCALE: NTS

DESIGNER: gm CHK'D:

DRAWING NUMBER PAGE

P-McD10651 8a

Quantity	JB I Type Mark	Product Group	PRODUCT NAME	Color / Finish Code(s)	Finishes	McD SKU#	Comments	Standard / Variable / Plus Up / Custom
Seating - Chairs & Stools								
31	CH	Chairs and Stools	Bent Plywood Chair	LM02 MT05	Seat: Wilsonart 7943-38 Colombian Walnut Frame: Chrome	CH-100-003		Standard
6	CC	Chairs and Stools	Café Chair	U03 MT05	Seat: Evolve U3 Cayenne Frame: Chrome	US-110-U03		Standard
14	BS	Chairs and Stools	Button Stool	U17 MT02	Evolve U17 Lime Base: TC1 9911-01007-1 Nearly Chrome	US-160-U17		Standard
10	BHDS	Chairs and Stools	Drum Stool	U29	Evolve U29 Licorice	US-191-U29		Standard
Seating - Banquettes								
1	RBL524	Banquettes	Roscoe Banquette, 24"	U28 LM01 MT07 TL24	Back & Seat: Evolve U28 Peppercorn Plinth: Arborite W450CA Rift Golden Oak Corner Guards: Aluminum Corner Bead Base: Tile by GC	BS-100-24S-0132		Standard
7	RBL842	Banquettes	Roscoe Banquette, 42"	U28 LM01 MT07 TL24	Back & Seat: Evolve U28 Peppercorn Plinth: Arborite W450CA Rift Golden Oak Corner Guards: Aluminum Corner Bead Base: Tile by GC	BS-100-42S-0132		Standard
3	RBL554	Banquettes	Roscoe Banquette, 54"	U28 LM01 MT07 TL24	Back & Seat: Evolve U28 Peppercorn Plinth: Arborite W450CA Rift Golden Oak Corner Guards: Aluminum Corner Bead Base: Tile by GC	BS-100-54S-0132		Standard
11	RBL960	Banquettes	Roscoe Banquette, 60"	U28 LM01 MT07 TL24	Back & Seat: Evolve U28 Peppercorn Plinth: Arborite W450CA Rift Golden Oak Corner Guards: Aluminum Corner Bead Base: Tile by GC	BS-100-60S-0132		Standard
1	RBLBCS	Banquettes	Roscoe Banquette, Square Corner	U28 LM01 MT07 TL24	Back & Seat: Evolve U28 Peppercorn Plinth: Arborite W450CA Rift Golden Oak Corner Guards: Aluminum Corner Bead Base: Tile by GC	BS-100-CRN-0132		Standard
1	LBAS24	Banquettes	Lincoln Attached Back Banquette Single, 24"	U01 U28 MT04	Back: Evolve U01 Paprika Seat: Evolve U28 Peppercorn Frame: 304 Stainless Steel		Located in Crew Room	Custom
1	LBAS54	Banquettes	Lincoln Attached Back Banquette Single, 54"	U01 U28 MT04	Back: Evolve U01 Paprika Seat: Evolve U28 Peppercorn Frame: 304 Stainless Steel		Located in Crew Room	Custom
1	LBACS	Banquettes	Lincoln Attached Back Banquette Single, Corner	U01 U28 MT04	Back: Evolve U01 Paprika Seat: Evolve U28 Peppercorn Frame: 304 Stainless Steel		Located in Crew Room	Custom
11		Banquettes	Roscoe Plinth Filler Panel	LM01	Plinth: Arborite W450CA Rift Golden Oak	BS-100-FP-LM01		Standard
Seating - Table Tops								
2	TT2420-SS	Tables and Counters	Table, 24x20, eased corner	SS01	Corian, Canvas	TT-101-2420-SS01		Standard
6	TT2442-SS	Tables and Counters	Table, 24x42, eased corner	SS01	Corian, Canvas	TT-101-2442-SS01		Standard
1	TT2442-SS	Tables and Counters	Table, 24x42 ADA, eased corner	SS01	Corian, Canvas	TT-101-2442a-SS01		Standard
4	TT2460-SS	Tables and Counters	Table, 24x60, eased corner	SS01	Corian, Canvas	TT-101-2460-SS01		Standard
1	TT3032-SS	Tables and Counters	Table, 30x32 ADA, eased corner	SS01	Corian, Canvas	TT-101-3032a-SS01		Standard
4	TT3060-SS	Tables and Counters	Table, 30x60, eased corner	SS01	Corian, Canvas	TT-101-3060-SS01		Standard
2	TT36-SS	Tables and Counters	Table, 36" dia	SS01	Corian, Canvas	TT-101-36d-SS01		Standard
1	TT36-SS	Tables and Counters	Table, 36" dia, ADA	SS01	Corian, Canvas	TT-101-36da-SS01		Standard
6	TT2420-LA	Tables and Counters	Table, 24x20, eased corner	LM02 EB01	Wilsonart 7943-38 Colombian Walnut Edge: Rehau 309423-014/592E (Doeliken Multiplex match)	TT-501-2420-LM02		Standard
4	TT2442-LA	Tables and Counters	Table, 24x42 ADA, eased corner	LM02 EB01	Wilsonart 7943-38 Colombian Walnut Edge: Rehau 309423-014/592E (Doeliken Multiplex match)	TT-501-2442a-LM02		Standard
2	TT2420-LA	Tables and Counters	Table, 24x20, eased corner	LM20 EB01	Wilsonart 7952-38 Asian Sand Edge: Rehau 309423-014/592E (Doeliken MultipleX match)	TT-501-2420-LM20	Located in Crew Room	Standard

ITEMS BY JBI



2650 El Presidio Street
Long Beach, CA 90810
T 1 310 537 8200
F 1 310 604 3827
www.jbi-interiors.com

REVISIONS

LTR DATE BY CHKD



BUILDING TYPE: -

STORE NUMBER: 36839

WINCHESTER
ROAD
MEMPHIS,
TENNESSEE

JBI LEGEND

DATE: 08-26-14

SCALE: NTS

DESIGNER: gm

CHKD:

DRAWING NUMBER

PAGE

P-McD10651

8b

Quantity	JBI Type Mark	Product Group	PRODUCT NAME	Color / Finish Code(s)	Finishes	McD SKU#	Comments	Standard / Variable / Plus Up / Custom
Seating - Feature Tables & Counters								
1	SCT12	Feature Table	Sydney Communal Table - 36"W x 144"L	SS03	Top: Corian Serene Sage. 2" thick self-edge, eased edges		Non-Standard Electrical Power Supply Box included	Standard
Steel Supports								
24		Steel	Standard Table Steel, Standard Height	MT02	TCI 9911-01007-1 Nearly Chrome	ST-101-02		Standard
12		Steel	Large Table Steel, Cored, Offset (ADA), Standard Height	MT02	TCI 9911-01007-1 Nearly Chrome	ST-103-02	Column Only	Standard
3		Steel	Large Table Steel, Bar Height	MT02	TCI 9911-01007-1 Nearly Chrome		Non-Standard 5" x 15" Plate Core Drilled	Custom
10		Steel	Stool Steel, Bar Height, Footring	MT02/MT04	TCI 9911-01007-1 Nearly Chrome Stainless Steel	ST-701-04		Standard
2		Steel	Standard Table Steel, Freestanding, Standard Height Column	MT02	TCI 9911-01007-1 Nearly Chrome	ST-201-02	Column Only	Standard
2		Steel	Table Base, Freestanding, 22" x 22"	MT02	TCI 9911-01007-1 Nearly Chrome	ST-203-2222	Base Only	Standard
3		Steel	12" Wall Mounted Brackets/Cleats for Eating counter	MT03	TCI 9911-01007-1 Nearly Chrome		Wall brackets for eating counter	CUSTOM
2		Steel	18" Wall Mounted Brackets / Cleats for Eating counter	MT03	TCI 9911-01007-1 Nearly Chrome		Wall brackets for eating counter	CUSTOM
Waste Receptacles								
1	WRH2	Waste Receptacles	Hyde Waste Receptacle - Double	LM02 MT04 EB02 MT02	Unit: Wilsonart 7943-36 Colombian Walnut Tray slide: Stainless Steel Edge: Rehau Nubian Brown Base: TCI 9911-01007-1 Nearly Chrome	WR-401-D-LM02		Standard
1	WRPL	Waste Receptacles	Perth Low - Double (used only with Timbers in Form/Allegro)	LM03 SS02 LM04 EB03 TL24	Unit: Wilsonart D91-80 Slate Grey Top: Corian Lihen Exposed Interior: Wilsonart 1595-80 Black Edge: Rehau Graphite Corner trim: 3/4"x3/4" 'inside' angle Base: Tile by GC	WR-101-D-LM03		Standard
E-Learning Center								
1		Learning Counter with under desk storage	25x90, ADA		Formica 8842-WR Weathered Ash Self Edge Storage Base: Black Kydex		Located in Crew Room	Custom
1		Learning Counter	15x48		Formica 8842-WR Weathered Ash Self Edge		Located in Crew Room	Custom
1		Learning Cabinet	60"W x 18"H x 15"D		Main Finish: Formica 8842-WR Weathered Ash Accent Finish/Edge: Formica 6902-58 Grenadine Support: French Cleat		(3) Cubbies Located in Crew Room	Custom

ITEMS BY JBI



2650 El Presidio Street
Long Beach, CA 90810
T 1 310 537 8200
F 1 310 604 3827
www.jbi-interiors.com

REVISIONS

LTR DATE BY CHK'D



BUILDING TYPE: -

STORE NUMBER: 36839

WINCHESTER
ROAD
MEMPHIS,
TENNESSEE

JBI LEGEND

DATE: 08-26-14

SCALE: NTS

DESIGNER: gm

CHK'D:

DRAWING NUMBER

PAGE

P-McD10651

8c

Quantity	JBI Type Mark	Product Group	PRODUCT NAME	Color / Finish Code(s)	Finishes	McD SKU#	Comments	Standard / Variable / Plus Up / Custom
Décor - Walls & Partitions								
1	1	Décor	Refresh Header w/ Stationary Panel, 36"H	LM01 MT04	Top Trim and Unit: Arborite W450CA Rift Golden Oak Lettering: Metal: 304 Stainless Steel	BC-36s-LM01		Variable
1	2	Décor	Fast Forward McCafe Cell Signage	MT04	Lettering: 304 Stainless Steel	MS-201-03	Surface mounted to tile. To be centered horizontally on site.	Standard
1	3a	Décor	Transom Laminate Panel System	LM26	Formica 2013-58 Fiesta	WP-12-LM26	For Restroom Doors Only	Standard
1	3b	Décor	Transom Laminate Panel System	LM03	Wilsonart D91-60 Slate Grey	WP-12-LM03	For Kitchen and Mop Closet Doors Only	Standard
5	4a-b	Décor	Half Wall, 32" H x 3" T	LM01 MT07 TL24	Arborite W450CA Rift Golden Oak Corner Guards: Aluminum Corner Bead Base: Tile by G.C.	DC-201-LM01	a) 4 @ 62 1/2" b) 1 L-shape	Variable
2	4c	Décor	Half Wall with Black Scorelines, 32" H x 3" T	LM01 MT07 TL24	Arborite W450CA Rift Golden Oak Scorelines: Black Corner Guards: Aluminum Corner Bead Base: Tile by G.C.	DC-201s-LM01		Variable
2	5	Décor	90° Half Wall with Corian Top Cap, 50"H x 4-1/2" T	LM01 SS01 MT07 MT01/MT04	Wall: W450CA Rift Golden Oak Scorelines: Black Top cap and Vertical Ends: Corian Canvas Corner Guards: Aluminum Corner Bead Base: Chemetal 927 Light Stainless Steel Aluminum with 1/2" Stainless Steel Corner Guards		[DC-203s-LM01] Note: Scoring occurs on both sides of wall. Non-standard height. To include chase for electrical and duplex outlets	Custom
1	6	Partitions	Portico Partition, 10 Seat, 9' 9" High	LM02 MT07 TL24 MT01/MT04	Timber: Wilsonart 7943-38 Colombian Walnut Corner Guard: Aluminum Corner Bead 6" LED recessed lights Base: Tile by GC		Non-standard size	Custom
2	7a-z	Partitions	Bundle Partition, 6 Bundles	LM02 MT07 TL24	Timber: Wilsonart 7943-38 Colombian Walnut Corner Guard: Aluminum Corner Bead Top Trim: Wilsonart 7943-38 Colombian Walnut Reveal: Wilsonart 7943-38 Colombian Walnut Base: Tile by GC	DC-620-6	a) 1 @ 108" H b) 1 @ 122" H	Variable
1	7c	Partitions	Bundle Partition with built in HM Display	LM02 MT07 TL22 LM03 L33	Timber: Wilsonart 7943-38 Colombian Walnut Corner Guard: Aluminum Corner Bead Top Trim: Wilsonart 7943-38 Colombian Walnut Reveal: Wilsonart 7943-38 Colombian Walnut Base: Tile by GC Happy Meal: Inside: Wilsonart D91-60 Slate Grey Extruded Aluminum Framing Clear Door: Tempered Glass Corners: Aluminum corner angles if needed Nora Lighting LED Puck light w/ transformer Dimensions 2 3/4" D X 1" H, Flush Mounted Part #: NMPK13LED42C Sits above wall base	DC-620H		Variable
1	7d	Partitions	Bundle Partition notched for Perth Low	LM02 MT07 TL24	Timber: Wilsonart 7943-38 Colombian Walnut Corner Guard: Aluminum Corner Bead Top Trim: Wilsonart 7943-38 Colombian Walnut Reveal: Wilsonart 7943-38 Colombian Walnut Base: Tile by GC	DC-620N		Variable
1	8	Décor	Restroom Door Decal - sold as one set (men-women)		White vinyl decal	MS-101-DC1		Standard

JBI

REVISIONS

--	--	--	--

--	--	--	--

--	--	--	--

[illegible]

--	--	--	--

[illegible]

--	--	--	--

--	--	--	--

--	--	--	--	--

[illegible]

--	--	--	--	--



STORE NUMBER: 36839

JB1 LEGEND

DATE: 08-26-14

SCALE: NTS

DESIGNER: gm

CHK'D:

DRAWING NUMBER

PAGE

P-McD10651

8d

Y:\P-2014\McDonald's\P-McD10651\Design\1 Prelim\P-McD10651-Prelim.dwg, 9a, 8/27/2014 1:13:03 PM, gmun

4
77



Y:\P-2014\McDonald's\P-McD10651\Design\ Prelim\P-McD10651-Prelim.dwg, 9b, 8/27/2014 1:13:03 PM, gmund

ITEMS BY GENERAL CONTRACTOR / OWNER



2650 El Presidio Street
Long Beach, CA 90810
T 1 310 537 8200
F 1 310 604 3827
www.jbi-interiors.com

REVISIONS

LTR DATE BY CHK'D



BUILDING TYPE:

STORE NUMBER: 36839

WINCHESTER
ROAD
MEMPHIS,
TENNESSEE

GC LEGEND

DATE: 08-26-14

SCALE: NTS

DESIGNER: gm

CHK'D:

DRAWING NUMBER

PAGE

P-McD10651

9b

GC Type Mark	Type	Description	Product	Finish & Color	McD Finish Code	Manufacturer	Contact Info	McD SKU#	Comments
Wall Finishes									
L	Trim	Chair Rail / Graphic Trim	RONDEC-DB	Satin Anodized Aluminum	TR01	Schluter	Earl Maicus, 800.287.0817 Ext 3410		Chair rail, as required for walls with tile wainscot with walkcovering above.
M1	Tile	Fast Forward Wall Tile & Face Underside of Menu Board Valance	Tenace	Espresso 6"x30"	TL31	Dal-Tile	Fred Davis, 872.423.5464, e. Fred.Davis@dal-tile.com		Grout Joint Recommendation 1/8" maximum. 2 week lead time. Grout Finish GT11
M2	Tile	SEEQ Center Island Wall & Beverage Center Side Walls	Architect	Factory 12"x24"	TL16	Eurowest	Charleen Keulian 800.978.7500 or Jan Deter 714.308.9551		Grout Joint Recommendation 1/8" thick. 2 week lead time. Grout Finish GT02
M3	Tile	SEEQ Accent Wall & Beverage Center Wall	Feel	Orange - Taste 10"x30"	TL04	Eurowest	Charleen Keulian 800.978.7500 or Jan Deter 714.308.9551		Grout Joint Recommendation 1/8" thick. 2 week lead time. Grout Finish GT04
M4	Tile	Fast Forward Drive thru Runway Wall Tile	Little Collection	LO01 - Gloss White 4"x16"		Dal-Tile	Fred Davis, 872.423.5464, e. Fred.Davis@dal-tile.com		Grout Joint Recommendation 1/8" thick. 2 week lead time. Grout Finish GT02
N1	Tile	Restrooms Walls	Architect	Factory 12"x24"	TL16	Eurowest	Charleen Keulian 800.978.7500 or Jan Deter 714.308.9551		Grout Joint Recommendation 1/8" thick. 2 week lead time. Grout Finish GT02
N2	Tile	Accent Restroom Walls	Feel	Red - Taste 4"x12"	TL05	Eurowest	Charleen Keulian 800.978.7500 or Jan Deter 714.308.9551		Tile To be installed vertically. Grout Joint Recommendation 1/8" thick. 2 week lead time. Grout Finish GT04
	Grout	Grout Used with Fast Forward Wall tile & Menu Board Wall tile	Keracolor S 78	Cocoa	GT11	Mapei	Mapei 1.800.428.2734		N/A
	Grout	Grout to be used with Beverage Walls SEEQ Center Island Wall, & Fast Forward Kitchen tile	Keracolor S 47	Charcoal	GT02	Mapei	Mapei 1.800.428.2734		N/A
	Grout	Grout used with SEEQ Accent Wall & Accent Restroom Walls	Keracolor S 27	Silver	GT04	Mapei	Mapei 1.800.428.2734		N/A
	Grout	Grout Used with Wood Plank Wall Tile	Keracolor S 24	Summer Tan	GT10	Mapei	Mapei 1.800.428.2734		N/A
P1	Paint	Restroom Door Interior and All Stall Door Jambes and Frames.	2154-30	Iron Mountain	PT08	Benjamin Moore	http://www.benjaminmoore.com		N/A
P2	Paint	Exterior of Restroom Door Frames, Men's Closets Door Frames, Beverage Bar Bulkhead	1689	Twilight Gold	PT26	Benjamin Moore	http://www.benjaminmoore.com		N/A
P3	Paint	Dining Room Side - Fast Forward Runway Door and Door Frame	1689	Twilight Gold	PT26	Benjamin Moore	http://www.benjaminmoore.com		N/A
Q1	Laminate	All Restroom Stall Doors and Interior Side of Restroom Doors	833-80	Hyndec Flakewood	LM11	Formica	Local Distributor		N/A
Q2	Laminate	Kitchen and Mop Doors	D31-80	Stone Grey	LM03	Wilsonart	Local Distributor		G.C. to laminate both sides of door.
Q3	Laminate	Restroom Exterior Doors	2015-52	Fiesta	LM26	Formica	Local Distributor		G.C. to laminate both sides of doors.
Miscellaneous Finishes									
R1	Solid Surface	Service Counter Top and Face	Corian	Linen	SS02	Dupont - Corian	Local Distributor		N/A
R2	Solid Surface	Dual Point Overshelf	Corian	Linen	SS02	Dupont - Corian	Local Distributor		N/A
S	Solid Surface	Beverage Center Top	Corian	Linen	SS02	Dupont - Corian	Local Distributor		N/A
T	Laminate	Beverage Center Unit Finish	W450VL	Rift Golden Oak - run grain horizontally	LM01	Arborite	Local Distributor		N/A
U	Solid Surface	Restroom Sink / Hand Dryer Panel	Corian	Rite Paper	SS04	Dupont - Corian	Local Distributor		N/A
V		Flat Panel TV	T.B.D.	To Be Determined by Owner Operator					N/A
W	Trim	Corner Tile Guard	RONDEC-AE	Satin Anodized Aluminum	TR03	Schluter	Earl Maicus, 800.287.0817 Ext 3410		N/A
X	Receptacle Wall Plates	Electrical Outlets	T.B.D.	Stainless Steel On Colored wall and White on white walls.					N/A
Y		Electrical Stub Out	T.B.D.	Floor electrical stub-out required for 90" Half Wall by JBI			By G.C.		See plans for location
Z		Wall Paneling				JBI	Eleanor T/F 310.667.5642 edeleon@jbi-interiors.com		G.C. to install Transom Panel to be provided by seating and Décor Company.
AA	Partitions	Alternate Intersuit Panel		Acrylic panel insert, 1" stand-off, stainless steel.					To be provided by Owner/Operator
BB	Solid Surface	Restroom Signage	Corian	Nocturne		JBI	Eleanor T/F 310.667.5642 edeleon@jbi-interiors.com		ADA approved with Braille (1) Men - Square (1) Women - Square Finish: Clear Acrylic with White Letters/Graphic
CC	Glass	Finishing Window	Skyline Glass	1/2" Tempered Bronze Tint Glass		Skyline Glass	Kelsey Lindsey, 773.782.3541		To be installed by GC
DD	Solid Surface	Transition Cap	Corian	Linen	SS02	Dupont - Corian	Local Distributor		1/2" Corian to overhang 1/4" on each end of finished wall. Note: The transition cap separates the tile finish on the service side from the regular dining room wall finishes on the opposite side.
EE	Touch Screen Games	Kiosk Game	Touch to Play	Table mount		Kioskpace Interactive Inc	Keith Lacy 258.717.7086		Other colors available black/brown/bronze/silver. Verify color selection with owner prior to purchasing. GC is responsible for installation and all electrical connections.
FF		Grease Room Furniture	T.B.D.	Lockers, Task Seating, and miscellaneous electronics by Owner Operator					N/A

3rd
5'6" IN
OUTSIDE
color